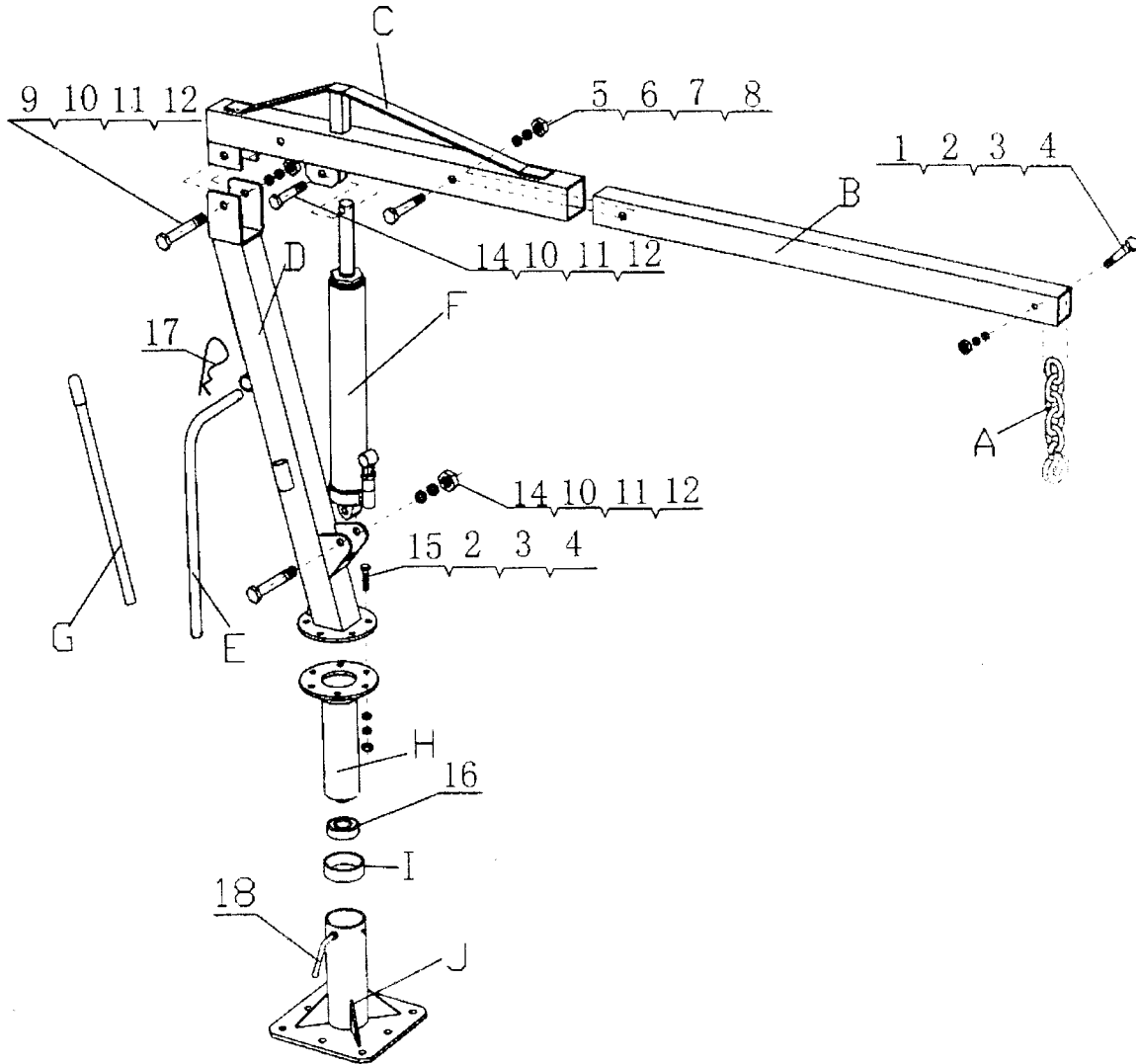


# SWIVEL BASE LIFTING CRANE

**MAX CAPACITY: 900KG**



Part No	Description	Q'ty	Part No	Description	Q'ty	Part No	Description	Q'ty
A	Chain & Hook	1	1	Bolt M12x80	1	11	Lock Washer Ø16	3
B	Boom Extension	1	2	Flat Washer Ø12	7	12	Nut M16	3
C	Boom	1	3	Lock Washer Ø12	7	13	Bolt M16x80	1
D	Main Post	1	4	Nut M12	7	14	Bolt M16x95	1
E	Handle	1	5	Bolt M14x90	1	15	Bolt M12x40	6
F	Jack	1	6	Flat Washer Ø14	1	16	Bearing	1
G	Jack Handle	1	7	Lock Washer Ø14	1	17	"R" Pin	1
H	Turntable	1	8	Nut M14	1	18	Wheel Binding Bolt	1
I	Wheel Hub	1	9	Bolt M16x110	1			
J	Base	1	10	Flat Washer Ø16	3			

# **ASSEMBLY INSTRUCTIONS**

**NOTE: During the assembly procedure, nuts and bolts should be hand-tightened only. Once assembly is complete, nuts and bolts must be fully tightened.**

1. Place the Base (#J) in the location on the truck bed where it is to be secured. This flat location must be able to support the lift with a 900KG load. (On most trucks, a desirable position is just behind the wheel so that the boom may be stored over the wheel well.)
2. Using a pencil, mark through the mounting holes in the Lift Base (#J) to mark drill holes.
3. Using a power drill and appropriate drill bit size, drill holes through truck bed.
4. Secure the base onto the truck bed holes using bolt, nut, lock washer and flat washer (not included, use correct size bolt, nut, washers as per the thickness of your truck bed).
5. Attach the Wheel Hub (#I) and bearing (#16) to Turntable (#H). Place Turntable (#H) onto the Base (#J) and secure it with Wheel Binding Bolt (#18).
6. Place the Main Post (#D) onto Turntable (#H) and secure it with Bolt (#15), Nut (#4), Flat Washer (#2) and Lock Washer (#3).
7. Attach boom (#C) to Main Post (#D) using Bolt (#9), Nut (#12), Lock Washer (#11) and Flat Washer (#10).
8. Attach the bottom of Pump Unit (#F) to Main Post (#D) using Bolt (#14), Nut (#12), Lock Washer (#11) and Flat Washer (#10).
9. Connect the Pump Unit plunger to the Boom bracket using Bolt (#13), Nut (#12), Lock Washer (#11) and Flat Washer (#10).
10. Slide the Extension Boom (#B) into the Boom and secure it with Bolt (#5), Nut (#8), Lock Washer (#7) and Flat Washer (#6).
11. **Now tighten all nuts and bolts.**

# **SAFE USAGE INSTRUCTIONS**

**TO PREVENT THE RISK OF INJURY TO YOURSELF AND OTHERS, OBSERVE THE FOLLOWING SAFETY INSTRUCTIONS.**

- 900KG Limit. Do not overload the hydraulic pump beyond rated capacity.
- Avoid any moving parts while using the pick up truck lift. While lifting, keep fingers and hands away from moving parts.
- Always set parking brake and block tires when using this truck lift. Vehicles with automatic transmissions should be left in "park". Manual transmissions should be left in gear. Never attempt to lift something while the vehicle is moving.
- Don't overreach. Keep proper footing and balance at all times.
- Never lift people or hoist loads over people.
- Stay Alert. Watch what you are doing. Use common sense. Do not operate any tool when you are tired.
- When installing this crane, please note that the Base must be securely bolted to the frame of the truck.
- Be aware, raising and working with loads can be dangerous.

- Understand these instructions and check the condition of the lifting crane before operation. Report and repair damaged, worn or faulty conditions immediately. Do not operate the lifting crane until any faults are corrected.
- Practice good safety techniques and be conscious of protecting yourself, your fellow workers, and the property in your work environment
- ALWAYS use “graded” lifting chains, hooks and shackles.
- Do not allow any body parts under or near the load or lifting mechanism.
- Do not operate the lifting crane with wet or greasy hands.
- Do not operate the lifting crane in environments where the risk of falling objects is present.
- Do not exceed the rated safe working load (SWL) specified for each boom position.
- The lifting crane should be used for the raising and lowering of loads ONLY.
- Handle stable loads only. Use care when handling long, high or wide loads as these may effect the stability of the lifting crane. Keep the lifting crane and load under control at all times.
- Never push so fast that you cannot stop in an emergency.
- When leaving the lifting crane unattended, lower the load. Before lowering, be sure the load is clear of any obstructions.
- Keep these instructions with the crane.

## OPERATING INSTRUCTIONS

Step 1: Release the Wheel Binding Bolt (#18) located on the base of the crane and swivel the post using handle (#E) so that the boom is pointing towards the object to be lifted.

Step 2: Position the Hook and Chain (#A) over the article to be moved by adjusting and locking the Extension Boom (#B) in place using Bolt (#5), Nut (#8), Lock Washer (#1) and Flat Washer (#6). Do not exceed the weight limits marked on the side of the boom.

Step 3: Hook around the article so that its weight is centered.

Step 4: Place the slotted end of the Pump Handle (#G) over the Pump Release Valve and close it by turning it in a clockwise direction.

Step 5: Insert the pump handle into its connector and lift the boom by pumping the handle in an up and down motion.

Step 6: When the article has been lifted to the desired height, it may be moved over the truck bed by slowly swiveling the Turntable on its base until the object is directly over the truck bed. Do not attempt to extend the Boom further while the object is still attached. If the object needs to be moved further, lower it, **adjust the boom,** and re-lift it.

Step 7: Lower the object onto the truck bed by using the Pump Handle to slowly turn the pump release valve in a counterclockwise direction.